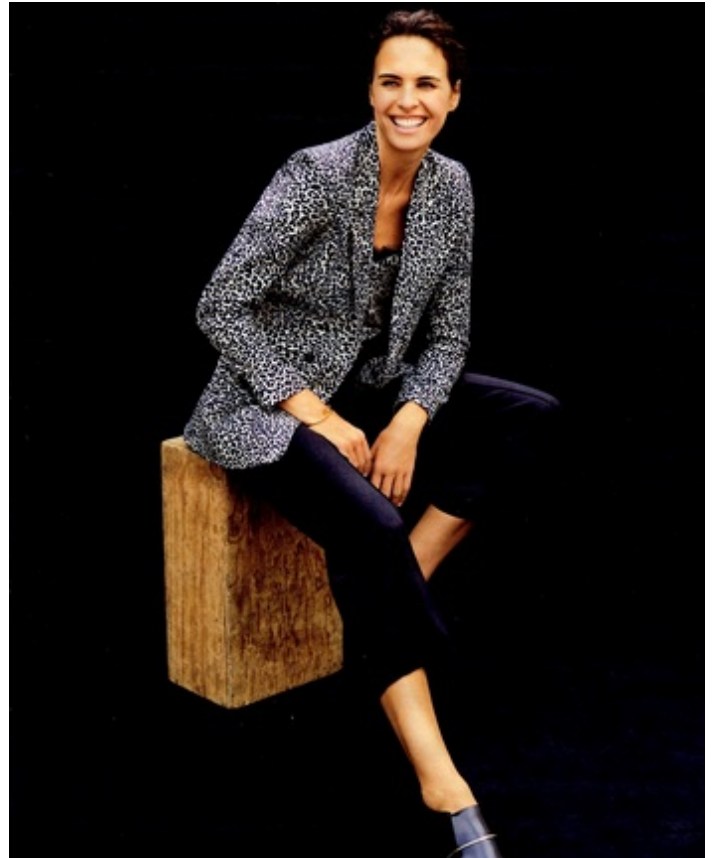
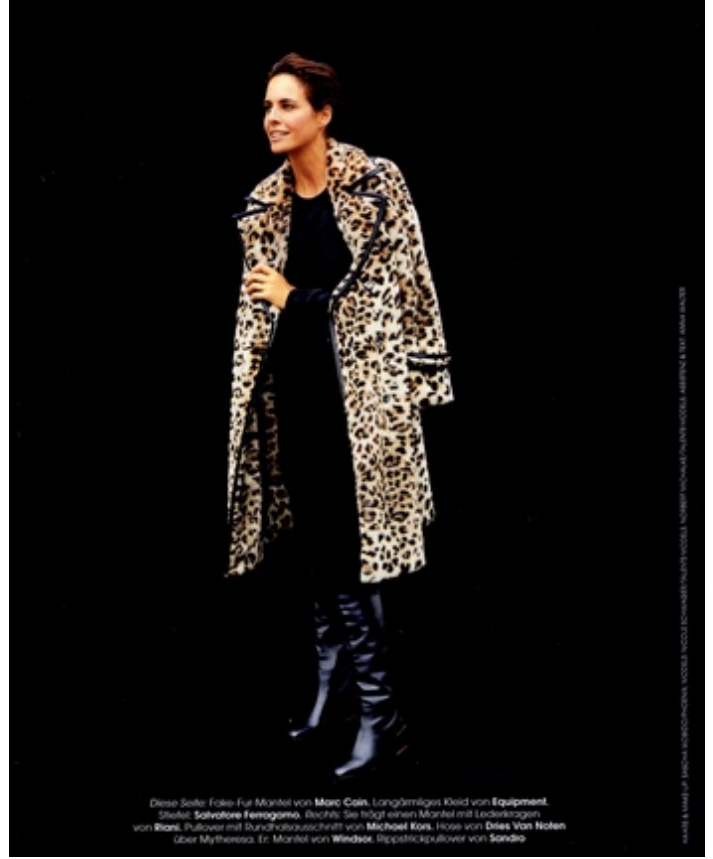


Height 179cm Dress size 36-38 Cup Size B Chest/Bust 92cm Waist 67cm Hips 95cm Shoe size 41
Hair Color dark brown Eye Color blue-gray



Height 179cm Dress size 36-38 Cup Size B Chest/Bust 92cm Waist 67cm Hips 95cm Shoe size 41
 Hair Color dark brown Eye Color blue-gray



Diese Seite: Felle-Fur-Mantel von Marc Cain, Langärmeliges Kleid von Equipment, Schuhe: Salvatore Ferragamo, Bechke: Sie trägt einen Mantel mit Lederkragen von Ricci, Pullover mit Bündelabschnitt von Michael Kors, Hose von Dries Van Noten über Mytheresa, Tr. Mantel von Windale, Rippstrickpullover von Sandro



Height 179cm Dress size 36-38 Cup Size B Chest/Bust 92cm Waist 67cm Hips 95cm Shoe size 41
 Hair Color dark brown Eye Color blue-gray



Height 179cm Dress size 36-38 Cup Size B Chest/Bust 92cm Waist 67cm Hips 95cm Shoe size 41
Hair Color dark brown Eye Color blue-gray



Height 179cm Dress size 36-38 Cup Size B Chest/Bust 92cm Waist 67cm Hips 95cm Shoe size 41
 Hair Color dark brown Eye Color blue-gray

